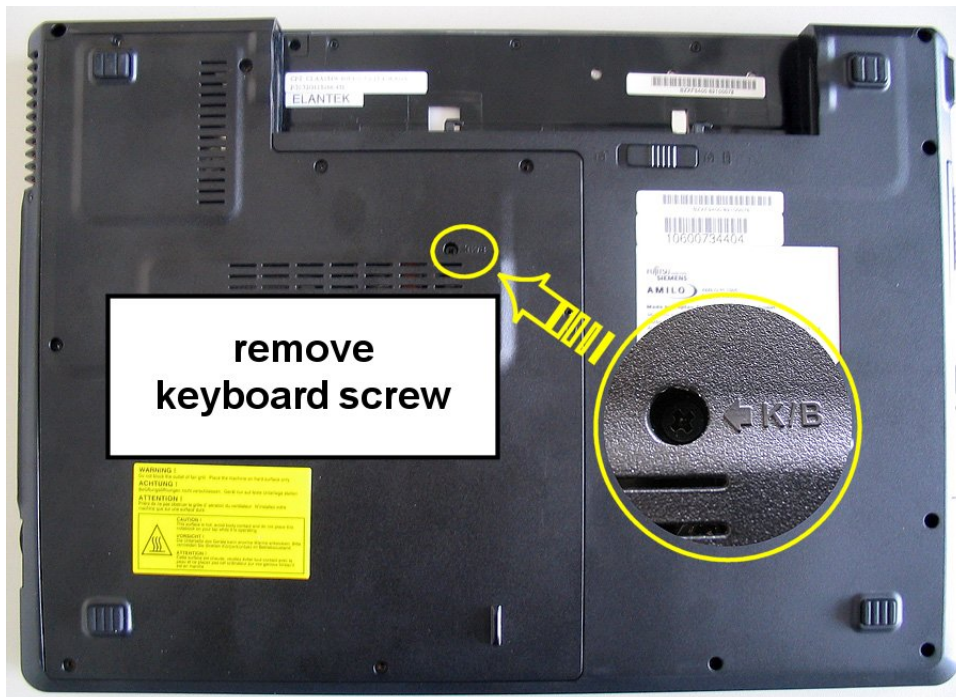


## **2nd Memory Module Pi 1505.**

Please remove the battery.



remove the screw from the location marked K/B on the underside of the system





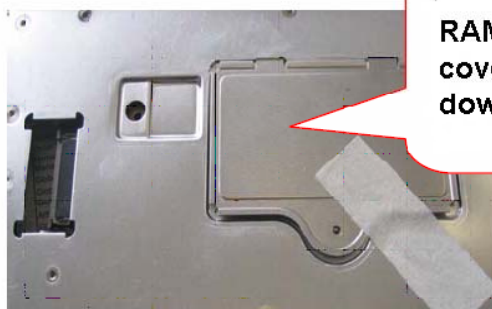
Release all 6 latches of the keyboard  
(please use something like the plastic tool to avoid damage and scratching)



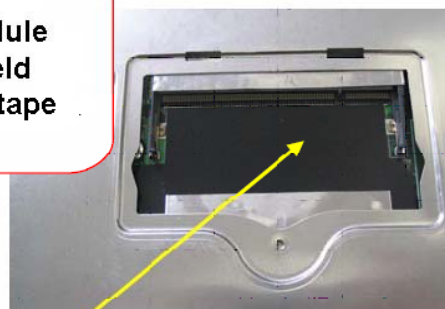
after unlock the latches you can lift the keyboard and turn it over without releasing the cable.



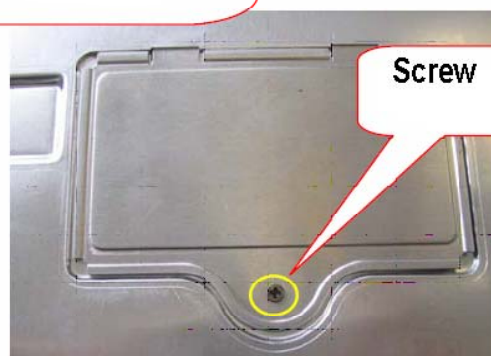
Lift RAM Cover and insert SIMM. A screw can be used to retain the cover.



RAM Module cover - held down by tape



Insert RAM module at an angle and clip down



Screw